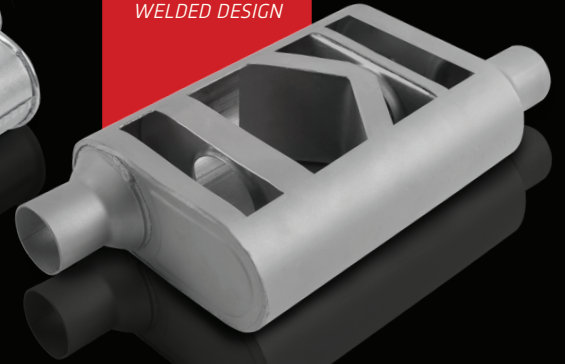


# RUMBLE

— EXHAUST —

**TURBO**  
PERFORMANCE

**CHAMBER**  
WELDED DESIGN



- 1 year limited warranty
- Spot-welded primary internals for maximum life and durability
- Aluminized construction to provide maximum corrosion resistance

TURBO PERFORMANCE

• "Z" flow multi-core for improved flow and turbo sound

## 4.5" X 9.75" MUFFLER

**OFFSET/CENTER**

IN	OUT	PART#
2"	2"	R27711
2.25"	2.25"	R27713
2.5"	2.5"	R27715

**OFFSET/OFFSET**

IN	OUT	PART#
2"	2"	R27712
2.25"	2.25"	R27714
2.5"	2.5"	R27696

**OFFSET/CENTER**

IN	OUT	PART#
2.25"	2.25"	R27717
2.5"	2.5"	R27718

**DUAL/DUAL**

IN	OUT	PART#
2.5"	2.5"	R27654

CHAMBER WELDED DESIGN

- Chambered to deliver that classic performance sound
- Fully welded outer case for superior structural integrity



**ROARING EXTERIOR SOUND**



**STRONG INTERIOR VIBRATION**

## 4.25" X 9.5" MUFFLER

**CENTRAL/DUAL**

IN	OUT	PART#
2.5"	2.25"	R27425
3"	2.5"	R27427

**CENTER/CENTER**

IN	OUT	PART#
2.5"	2.5"	R27426
3"	3"	R27428

**OFFSET/OFFSET**

IN	OUT	PART#
2.25"	2.25"	R27429
2.5"	2.5"	R27430

**OFFSET/CENTER**

IN	OUT	PART#
2.25"	2.25"	R27431
2.5"	2.5"	R27432

**CENTER/DUAL**

IN	OUT	PART#
3"	2.5"	R20402
3"	2.25"	R20422
2.25"	2.25"	R24422
2.5"	2.5"	R25400
2.5	2.25"	R25422

**OFFSET/CENTER**

IN	OUT	PART#
2"	2"	R22041
2.25"	2.25"	R22441
2.5"	2.5"	R22541
3"	3"	R23041

**OFFSET/OFFSET**

IN	OUT	PART#
2"	2"	R22043
2.25"	2.25"	R22443
2.5"	2.5"	R22543
3"	3"	R23043

**CENTER/OFFSET**

IN	OUT	PART#
2.25"	2.25"	R22442
2.5"	2.5"	R22542
3"	3"	R23042

**DUAL/CENTER**

IN	OUT	PART#
2.5"	2.5"	R22552

**DUAL/OFFSET**

IN	OUT	PART#
2.5"	2.25"	R22583

**DUAL/DUAL**

IN	OUT	PART#
2.25"	2.25"	R24134

**DUAL/DUAL**

IN	OUT	PART#
2.25"	2.25"	R24554